



University of California, Berkeley

Student Athlete Academic Performance Summary Spring 2013

Table of Contents

<u>Item</u>	<u>Description</u>	<u>Page</u>
Team GPA's, 3.0 GPA Listing, Gender Comparison		1
	Team GPA listing, Count of Teams above 3.0, GPA 3.0 Gender comparison.	
Team GPA's, Historical by Term		2
	Cumulative GPA, Averaged by Team, current term and 10 previous terms.	
Team GPA's, Historical by Academic Year		3
	Cumulative GPA, Avg. by Team, current term and 5 previous academic years.	
GPA Distribution, Sport Detail		4
	Count and percent in each GPA range, listed by sport.	
GPA Distribution, U/G Comparison		5
	GPA distribution divided by Gender, compared to All Undergraduates.	
GPA by Class Level		6
	Average GPA, by class level, and Gender, compared to All Undergraduates.	
Admission by Exception GPA Summary, Fall		7
	Male/Female, Blue and Red Admission Categories (formerly B, C/D)	
Major Comparison		8
	Top 15 majors for all Student Athletes and all Undergraduates.	
NCAA Academic Progress Rate (APR)		9
	The current multi-year score, and the past 6 years from 2006-07 to 2011-12.	
NCAA Graduation Success Rate (with FGR)		10
	The past 4-year periods from 1999 to 2005.	

For all charts and graphs

- GPA and count data for Undergraduates provided by the CalAnswers data warehouse.
- The student-athlete numbers represent only those that were active during Spring 2013, and did not Withdraw Via Petition, or have a registration block.

Team GPA's

Men's Teams			5 Yr	5 Yr
Sport	Team Count	Cum GPA	Avg	Incr.
Baseball	35	2.915	2.812	+
Basketball	14	2.644	2.637	+
Crew	65	2.928	2.777	+
Cross Country	16	2.985	3.072	
Football	98	2.743	2.650	+
Golf	12	3.062	3.178	
Gymnastics	20	2.992	3.078	
Rugby	63	2.827	2.839	
Soccer	19	2.983	2.957	+
Swim/Dive	38	2.948	2.964	
Tennis	12	3.301	3.210	+
Track Indoor	52	2.817	2.862	
Track Outdoor	54	2.814	2.874	
Water Polo	28	3.183	3.101	+
Men's Team Avg		2.939	2.933	
# of Teams above 3.0	3			

Women's Teams			5 Yr	5 Yr
Sport	Team Count	Cum GPA	Avg	Incr.
Basketball	13	2.622	2.817	
Crew	66	3.041	3.049	
Cross Country	19	3.172	3.207	
Field Hockey	19	3.272	3.222	+
Golf	9	3.526	3.224	+
Gymnastics	14	3.113	3.023	+
Lacrosse	27	3.264	3.142	+
Soccer	29	3.277	3.192	+
Softball	18	2.994	2.751	+
Swim/Dive	25	3.184	3.108	+
Tennis	10	3.221	3.148	+
Track Indoor	47	3.087	3.038	+
Track Outdoor	47	3.087	3.050	+
Volleyball	15	3.264	3.264	
Water Polo	25	3.090	3.177	
Women's Team Avg		3.148	3.092	
# of Teams above 3.0	13			

Teams with a GPA of 3.0+

Men's Teams				Women's Teams		
Count	%	GPA		Count	%	GPA
3 of 14	21.4%	2.939	Spring 2013	13 of 15	86.7%	3.148
4 of 14	28.6%	2.913	Fall 2012	13 of 15	86.7%	3.145
5 of 14	35.7%	2.922	Spring 2012	11 of 15	73.3%	3.135
5 of 14	35.7%	2.957	Fall 2011	12 of 15	80.0%	3.123
4 of 14	28.6%	2.914	Spring 2011	13 of 15	86.7%	3.140
5 of 13	38.5%	2.816	Fall 2010	11 of 14	78.6%	3.066
5 of 13	38.5%	2.859	Spring 2010	10 of 14	71.4%	3.088
6 of 13	46.2%	2.930	Fall 2009	9 of 14	64.3%	3.038
6 of 13	46.2%	2.963	Spring 2009	11 of 14	78.6%	3.060
6 of 13	46.2%	2.930	Fall 2008	11 of 14	78.6%	3.038
4 of 13	30.8%	2.956	Spring 2008	12 of 14	85.7%	3.111

Student Athletes with a GPA of 3.0+

Male Student Athletes			Female Student Athletes		
GPA 3.0+	175	38.5%	GPA 3.0+	218	68.1%
Total	455		Total	320	
Avg GPA	2.886		Avg GPA	3.130	

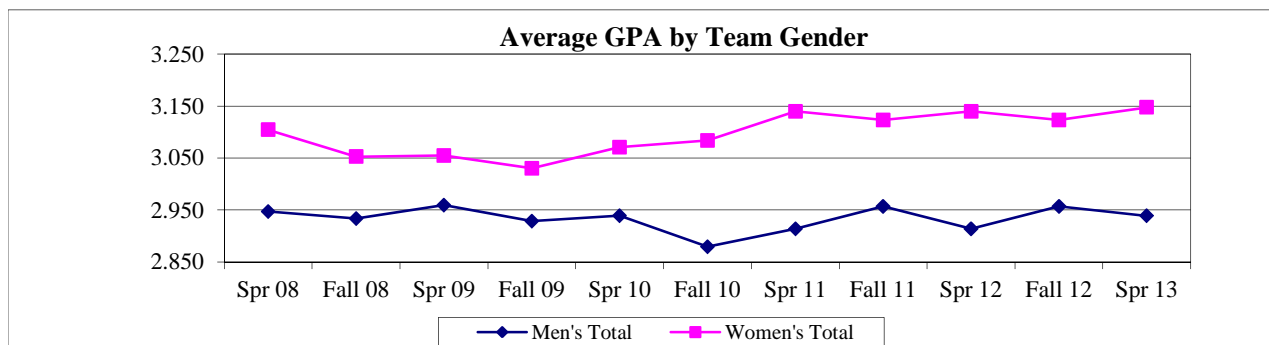
Student Athletes

GPA 3.0+	393	50.7%
Total	775	
Avg GPA	2.987	

Notes: All GPA's on this page are averages of Cumulative GPA's, not Term GPA's.
 Team GPA's are unweighted averages of all team members that were active during the term.
 The "5 Yr Incr." column denotes those teams who's current Team GPA is greater than the previous 5 year average.
 The team that is highlighted in green has the highest Team GPA within the respective gender group.
 Students are on multiple teams. So the average of the Team GPA's will not equal the Student Athlete averages.

Team Cum GPA's, Historical

	incl-fall				in-out				in-out				5 Yr																																			
	Spr 08	Fall 08	Spr 09	Fall 09	Spr 10	Fall 10	Spr 11	Fall 11	Spr 12	Fall 12	Spr 13	Avg																																				
M. Baseball	2.802	2.764	2.781	2.736	2.813	2.842	2.838	2.819	2.835	2.892	2.915	2.812	Baseball																																			
M. Basketball	2.764	2.650	2.726	2.606	2.630	2.400	2.511	2.784	2.624	2.671	2.644	2.637	Basketball																																			
M. Crew	2.764	2.711	2.756	2.736	2.741	2.709	2.775	2.850	2.813	2.914	2.928	2.777	Crew																																			
M. Cross Country	3.217	3.153	3.073	3.075	3.125	3.049	2.975	3.167	3.149	2.732	2.985	3.072	Cross Cntry																																			
M. Football	2.697	2.663	2.662	2.621	2.655	2.634	2.692	2.612	2.602	2.662	2.743	2.650	Football																																			
M. Golf	3.113	3.151	3.188	3.267	3.264	3.180	3.141	3.204	3.105	3.163	3.062	3.178	Golf																																			
M. Gymnastics	3.193	3.094	3.080	2.985	2.942	3.074	3.070	3.163	3.078	3.101	2.992	3.078	Gymnastics																																			
M. Rugby	2.948	2.858	2.902	2.731	2.859	2.782	2.822	2.808	2.838	2.845	2.827	2.839	Rugby																																			
M. Soccer	2.912	2.982	3.061	3.083	3.025	2.793	2.951	2.949	2.914	2.901	2.983	2.957	Soccer																																			
M. Swim/Dive	2.968	3.005	2.976	3.038	2.999	2.954	2.973	2.944	2.924	2.858	2.948	2.964	Swim/Dive																																			
M. Tennis	3.224	3.194	3.226	3.188	3.226	3.196	3.174	3.182	3.183	3.310	3.301	3.210	Tennis																																			
M. Track Indoor	2.836	2.843	2.910	2.912	2.886	2.803	2.890	2.890	2.862	2.789	2.817	2.862	Track In																																			
M. Track Outdoor	2.836	2.843	2.910	2.912	2.886	2.803	2.881	2.914	2.927	2.825	2.814	2.874	Track Out																																			
M. Water Polo	2.985	3.162	3.180	3.111	3.093	3.094	3.104	3.112	3.055	3.116	3.183	3.101	Water Polo																																			
W. Basketball	2.931	2.874	2.852	2.672	2.717	2.878	2.983	2.837	2.712	2.716	2.622	2.817	Basketball																																			
W. Crew	3.097	3.112	3.118	3.154	3.143	3.018	3.049	2.904	2.896	2.998	3.041	3.049	Crew																																			
W. Cross Country	3.342	3.069	3.098	3.009	3.223	3.263	3.297	3.288	3.273	3.207	3.172	3.207	Cross Cntry																																			
W. Field Hockey	3.214	3.198	3.136	3.236	3.216	3.270	3.319	3.297	3.238	3.100	3.272	3.222	Fld Hockey																																			
W. Golf	3.256	2.957	3.086	3.074	3.110	3.291	3.335	3.354	3.312	3.466	3.526	3.224	Golf																																			
W. Gymnastics	3.063	3.072	3.046	2.983	2.948	3.024	3.031	3.007	2.970	3.082	3.113	3.023	Gymnastics																																			
W. Lacrosse	3.121	3.130	3.129	3.122	3.081	3.072	3.127	3.180	3.245	3.211	3.264	3.142	Lacrosse																																			
W. Soccer	3.197	3.150	3.115	3.209	3.241	3.093	3.226	3.217	3.182	3.289	3.277	3.192	Soccer																																			
W. Softball	2.570	2.671	2.690	2.802	2.801	2.541	2.713	2.781	2.820	3.116	2.994	2.751	Softball																																			
W. Swim/Dive	3.087	3.184	3.154	3.088	3.076	2.992	3.089	3.113	3.113	3.181	3.184	3.108	Swim/Dive																																			
W. Tennis	3.359	3.178	3.167	2.938	3.118	3.183	3.140	3.036	3.150	3.212	3.221	3.148	Tennis																																			
W. Track Indoor	3.013	3.023	2.983	2.914	2.937	3.024	3.148	3.152	3.129	3.053	3.087	3.038	Track In																																			
W. Track Outdoor	3.013	3.023	2.983	2.914	2.937	3.024	3.158	3.167	3.153	3.131	3.087	3.050	Track Out																																			
W. Volleyball	3.154	3.082	3.132	3.150	3.306	3.355	3.301	3.400	3.463	3.297	3.264	3.264	Volleyball																																			
W. Water Polo	3.150	3.068	3.134	3.188	3.213	3.229	3.184	3.119	3.372	3.111	3.090	3.177	Water Polo																																			
	Spr 08				Fall 08				Spr 09				Fall 09				Spr 10				Fall 10				Spr 11				Fall 11				Spr 12				Fall 12				Spr 13				5 Yr Avg			
Men's Total	2.947	2.934	2.959	2.929	2.939	2.880	2.914	2.957	2.914	2.957	2.939	2.933	Men's																																			
Women's Total	3.104	3.053	3.055	3.030	3.071	3.084	3.140	3.123	3.140	3.123	3.148	3.092	Women's																																			



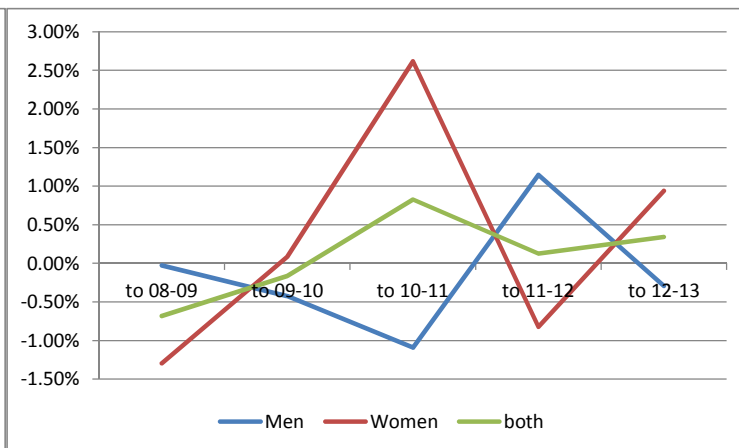
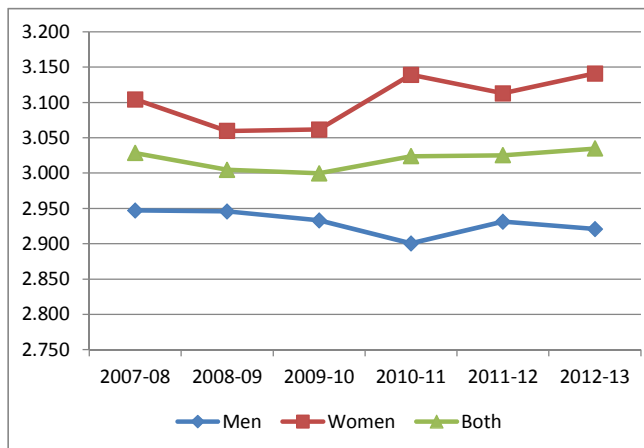
Notes: This compares the current term, Team GPA, with the previous 5 years (10 terms).
Teams highlighted in green, in the above table, have a term GPA higher than their 5 year average GPA.
Spring 08 was the last term that included Fall GPA (it was an academic year average).
Spring 11 was the 1st year that Indoor and Outdoor Track were separated.

Academic Year GPA Review

	2007-08	2008-09	2009-10	2010-11	2011-12	2012-13		07-08 to 08-09	08-09 to 09-10	09-10 to 10-11	10-11 to 11-12	11-12 to 12-13	5-Yr Sum	
M. Baseball	2.802	2.781	2.773	2.820	2.829	2.893	+	-0.75%	-0.31%	1.72%	0.32%	2.25%	3.24%	Baseball
M. Basketball	2.764	2.726	2.630	2.511	2.659	2.637		-1.37%	-3.51%	-4.53%	5.90%	-0.82%	-4.34%	Basketball
M. Crew	2.764	2.780	2.785	2.732	2.825	2.941	+	0.58%	0.17%	-1.88%	3.38%	4.12%	6.36%	Crew
M. Cross Country	3.217	3.099	3.044	2.962	3.149	2.789		-3.67%	-1.77%	-2.70%	6.33%	-11.43%	-13.24%	Cross Cntry
M. Football	2.697	2.678	2.672	2.648	2.634	2.707	+	-0.70%	-0.22%	-0.92%	-0.50%	2.75%	0.41%	Football
M. Golf	3.113	3.214	3.289	3.168	3.105	3.145	+	3.24%	2.33%	-3.67%	-1.99%	1.27%	1.18%	Golf
M. Gymnastics	3.193	3.080	2.942	3.070	3.078	2.992		-3.54%	-4.49%	4.36%	0.26%	-2.77%	-6.19%	Gymnastics
M. Rugby	2.948	2.889	2.815	2.827	2.860	2.837		-2.00%	-2.57%	0.43%	1.16%	-0.78%	-3.76%	Rugby
M. Soccer	2.912	2.967	3.035	2.868	2.914	2.935	+	1.89%	2.29%	-5.49%	1.57%	0.75%	1.01%	Soccer
M. Swim/Dive	2.968	2.976	2.994	2.954	2.932	2.923		0.27%	0.60%	-1.33%	-0.75%	-0.29%	-1.50%	Swim/Dive
M. Tennis	3.224	3.250	3.221	3.174	3.183	3.269	+	0.81%	-0.91%	-1.43%	0.26%	2.71%	1.44%	Tennis
M. Track, Indoor	2.836	2.828	2.886	2.890	2.862	2.818		-0.28%	2.06%	0.13%	-0.97%	-1.52%	-0.58%	Track Indoor
M. Track, Outdoor	2.836	2.828	2.886	2.881	2.927	2.816		-0.28%	2.06%	-0.18%	1.60%	-3.80%	-0.60%	Track Outdoor
M. Water Polo	2.985	3.147	3.094	3.099	3.082	3.188	+	5.43%	-1.68%	0.16%	-0.56%	3.45%	6.79%	Water Polo
W. Basketball	2.931	2.852	2.703	2.983	2.770	2.622		-2.70%	-5.22%	10.38%	-7.17%	-5.34%	-10.05%	Basketball
W. Crew	3.097	3.130	3.152	3.046	2.904	3.005	+	1.07%	0.70%	-3.35%	-4.67%	3.48%	-2.77%	Crew
W. Cross Country	3.342	3.105	3.049	3.297	3.294	3.203		-7.09%	-1.81%	8.14%	-0.09%	-2.77%	-3.62%	Cross Cntry
W. Field Hockey	3.214	3.191	3.237	3.279	3.247	3.127		-0.72%	1.44%	1.31%	-0.99%	-3.67%	-2.63%	Fld Hockey
W. Golf	3.256	2.933	3.110	3.335	3.312	3.526	+	-9.92%	6.02%	7.26%	-0.71%	6.47%	9.11%	Golf
W. Gymnastics	3.063	3.046	2.948	3.050	2.970	3.113	+	-0.56%	-3.21%	3.44%	-2.61%	4.81%	1.87%	Gymnastics
W. Lacrosse	3.121	3.129	3.095	3.105	3.194	3.264	+	0.26%	-1.08%	0.33%	2.84%	2.21%	4.55%	Lacrosse
W. Soccer	3.197	3.137	3.244	3.205	3.188	3.304	+	-1.88%	3.42%	-1.21%	-0.53%	3.63%	3.44%	Soccer
W. Softball	2.570	2.690	2.801	2.713	2.820	2.994	+	4.67%	4.11%	-3.13%	3.93%	6.18%	15.76%	Softball
W. Swim/Dive	3.087	3.154	3.072	3.084	3.112	3.184	+	2.17%	-2.59%	0.37%	0.92%	2.31%	3.18%	Swim/Dive
W. Tennis	3.359	3.193	3.118	3.140	3.150	3.221	+	-4.94%	-2.35%	0.69%	0.34%	2.24%	-4.03%	Tennis
W. Track, Indoor	3.013	3.020	2.965	3.150	3.129	3.103		0.23%	-1.82%	6.22%	-0.64%	-0.83%	3.16%	Track Indoor
W. Track, Outdoor	3.013	3.020	2.965	3.158	3.153	3.103		0.23%	-1.82%	6.51%	-0.15%	-1.59%	3.19%	Track Outdoor
W. Volleyball	3.154	3.161	3.250	3.351	3.390	3.258		0.22%	2.82%	3.11%	1.15%	-3.88%	3.42%	Volleyball
W. Water Polo	3.150	3.134	3.217	3.190	3.063	3.089	+	-0.51%	2.64%	-0.82%	-3.99%	0.83%	-1.85%	Water Polo
	2007-08	2008-09	2009-10	2010-11	2011-12	2012-13		07-08 to 08-09	08-09 to 09-10	09-10 to 10-11	10-11 to 11-12	11-12 to 12-13	5-Yr Sum	
Total Men's	2.947	2.946	2.933	2.900	2.931	2.921		-0.03%	-0.42%	-1.10%	1.14%	-0.29%	-0.70%	Men's
Total Women's	3.104	3.060	3.062	3.139	3.113	3.141		-1.30%	0.08%	2.62%	-0.83%	0.94%	1.52%	Women's
Total Both	3.028	3.005	3.000	3.024	3.025	3.035		-0.68%	-0.16%	0.83%	0.13%	0.34%	0.45%	Both

Notes:

These charts use Cumulative GPA Team averages, unweighted, including those students active for either term.
 In the GPA chart, highlighted teams have a current year average greater than the previous year.
 In the Percent Change chart (on the right side), the team names highlighted in GREEN show a positive improvement over the past five years.
 In the Five-Year-Sum column, the highest and lowest percent change is highlighted in green and red, respectively.



GPA Distribution, Sport Detail

Men's Teams

	Below 2.0		2.00 - 2.49		2.50 - 2.99		3.00 - 3.49		3.50 - 4.00		Total Cnt
	Cnt	%	Cnt	%	Cnt	%	Cnt	%	Cnt	%	
Baseball		0%	5	14%	18	51%	9	26%	3	9%	35
Basketball		0%	4	29%	8	57%	2	14%		0%	14
Crew		0%	8	12%	27	42%	28	43%	2	3%	65
Cross Country		0%	3	19%	6	38%	3	19%	4	25%	16
Football	1	1%	30	31%	44	45%	15	15%	8	8%	98
Golf		0%		0%	7	58%	4	33%	1	8%	12
Gymnastics		0%	4	20%	6	30%	6	30%	4	20%	20
Rugby	2	3%	12	19%	26	41%	18	29%	5	8%	63
Soccer		0%	2	11%	8	42%	7	37%	2	11%	19
Swim/Dive		0%	3	8%	19	50%	15	39%	1	3%	38
Tennis		0%		0%	2	17%	6	50%	4	33%	12
Track Indoor	1	2%	8	15%	27	52%	11	21%	5	10%	52
Track Outdoor	1	2%	9	17%	27	50%	12	22%	5	9%	54
Water Polo		0%	2	7%	6	21%	15	54%	5	18%	28
Grand Total	5	1%	90	17%	231	44%	151	29%	49	9%	526

Women's Teams

	Below 2.0		2.00 - 2.49		2.50 - 2.99		3.00 - 3.49		3.50 - 4.00		Total Cnt
	Cnt	%	Cnt	%	Cnt	%	Cnt	%	Cnt	%	
Basketball	1	8%	5	38%	2	15%	5	38%		0%	13
Crew		0%	5	8%	24	36%	26	39%	11	17%	66
Cross Country	1	5%	1	5%	3	16%	11	58%	3	16%	19
Field Hockey		0%		0%	2	11%	12	63%	5	26%	19
Golf		0%		0%		0%	2	22%	7	78%	9
Gymnastics		0%		0%	6	43%	6	43%	2	14%	14
Lacrosse		0%		0%	3	11%	18	67%	6	22%	27
Soccer		0%		0%	6	21%	14	48%	9	31%	29
Softball		0%	4	22%	6	33%	3	17%	5	28%	18
Swim/Dive		0%	1	4%	3	12%	18	72%	3	12%	25
Tennis		0%		0%	1	10%	7	70%	2	20%	10
Track Indoor	4	9%	2	4%	11	23%	22	47%	8	17%	47
Track Outdoor	4	9%	2	4%	11	23%	22	47%	8	17%	47
Volleyball	1	7%	1	7%	1	7%	7	47%	5	33%	15
Water Polo		0%	2	8%	10	40%	9	36%	4	16%	25
Grand Total	11	3%	23	6%	89	23%	182	48%	78	20%	383

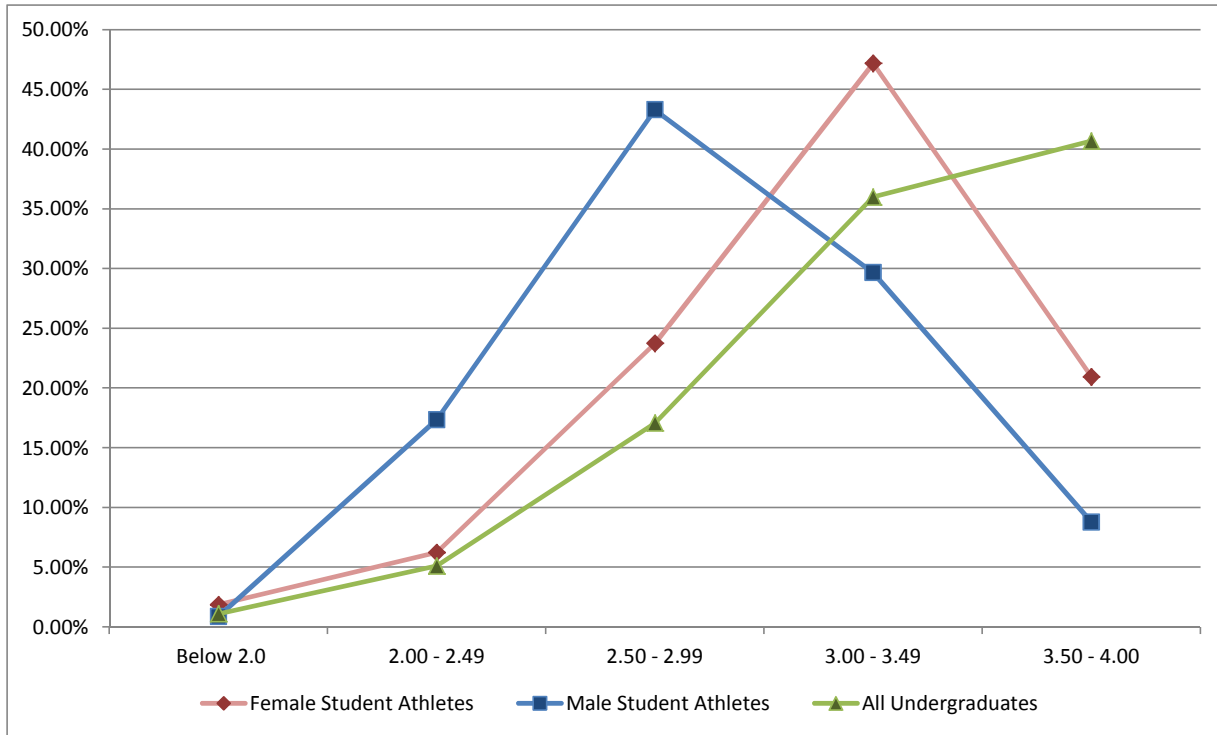
GPA Distribution, Gender Detail

	Below 2.0		2.00 - 2.49		2.50 - 2.99		3.00 - 3.49		3.50 - 4.00		Total Count
	Count	%	Count	%	Count	%	Count	%	Count	%	
Female Athletes	6	1.88%	20	6.25%	76	23.75%	151	47.19%	67	20.94%	320
Male Athletes	4	0.88%	79	17.36%	197	43.30%	135	29.67%	40	8.79%	455
Student Athletes	10	1.29%	99	12.77%	273	35.23%	286	36.90%	107	13.81%	775

Notes: These charts use Cumulative GPA for students Active during the term.
 Highlighted numbers represent the team with the highest percentage in each range bracket.
 The percent column (%) represents the number of student athletes on their team within this GPA range.

GPA Distribution, U/G Comparison

Cumulative GPA, Percent Count in arbitrary range brackets, by Gender and compared to All Undergraduates.



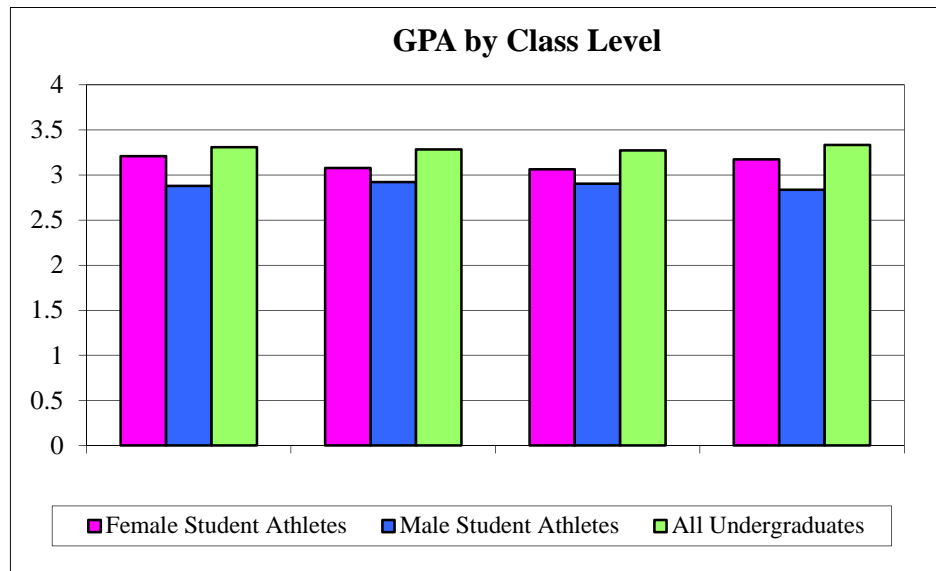
Student Athlete Totals compared with Undergraduate Totals

	Below 2.0		2.00 - 2.49		2.50 - 2.99		3.00 - 3.49		3.50 - 4.00		Total Count
	Count	%	Count	%	Count	%	Count	%	Count	%	
Female Athletes	6	1.88%	20	6.25%	76	23.75%	151	47.19%	67	20.94%	320
Male Athletes	4	0.88%	79	17.36%	197	43.30%	135	29.67%	40	8.79%	455
All Student Athletes	10	1.29%	99	12.77%	273	35.23%	286	36.90%	107	13.81%	775
Female Undergrads	108	0.8%	556	4.3%	2058	15.9%	4707	36.5%	5477	42.4%	12906
Male Undergrads	160	1.4%	683	6.1%	2071	18.4%	3996	35.5%	4362	38.7%	11272
All Undergraduates	268	1.1%	1239	5.1%	4129	17.1%	8703	36.0%	9839	40.7%	24178

GPA by Class Level

Cumulative GPA, Averaged by Class Level, with Gender and All Undergraduate comparison.

	Freshmen		Sophmore		Junior		Senior		Total	
	GPA	Count	GPA	Count	GPA	Count	GPA	Count	GPA	Count
Female Student Athletes	3.211	88	3.078	85	3.063	82	3.173	65	3.130	320
Male Student Athletes	2.88	141	2.921	112	2.903	100	2.838	102	2.886	455
All Student Athletes	3.007	229	2.989	197	2.975	182	2.968	167	2.987	775
Female Undergraduates	3.319	2560	3.314	2479	3.305	3193	3.368	4674	3.332	12906
Male Undergraduates	3.298	2250	3.258	2159	3.240	2973	3.290	3890	3.272	11272
All Undergraduates	3.309	4810	3.283	4638	3.274	6166	3.333	8564	3.303	24178



Review of Admission By Exception (ABE) Student Athletes

Category "Red" (formerly "C/D")

	First Year					Not First Year					All Levels Combined					
	Avg GPA			Probation		Avg GPA			Probation		Avg GPA			Probation		
	Cnt	Cum	Spr	Cnt	Pcnt	Cnt	Cum	Spr	Cnt	Pcnt	Cnt	Cum	Spr	Cnt	Pcnt	
Female	1	2.139	1.931	1	100.0%	6	2.410	2.025	2	33.3%	7	2.371	2.011	3	42.9%	Female
Male	6	2.6593	2.745	0	0.0%	24	2.422	2.422	5	20.8%	30	2.469	2.486	5	16.7%	Male
Total	7	2.585	2.629	1	14.3%	30	2.419	2.342	7	23.3%	37	2.451	2.396	8	21.6%	Total

Category "Blue" (formerly "B")

	First Year					Not First Year					All Levels Combined					
	Avg GPA			Probation		Avg GPA			Probation		Avg GPA			Probation		
	Cnt	Cum	Spr	Cnt	Pcnt	Cnt	Cum	Spr	Cnt	Pcnt	Cnt	Cum	Spr	Cnt	Pcnt	
Female	17	2.862	2.885	1	5.9%	36	3.007	2.925	4	11.1%	53	2.960	2.912	5	9.4%	Female
Male	40	2.748	2.774	3	7.5%	73	2.699	2.764	7	9.6%	113	2.716	2.768	10	8.8%	Male
Total	57	2.782	2.807	4	7.0%	109	2.801	2.817	11	10.1%	166	2.794	2.814	15	9.0%	Total

Category "Gold" (formerly "A", also Non ABE)

	First Year					Not First Year					All Levels Combined					
	Avg GPA			Probation		Avg GPA			Probation		Avg GPA			Probation		
	Cnt	Cum	Spr	Cnt	Pcnt	Cnt	Cum	Spr	Cnt	Pcnt	Cnt	Cum	Spr	Cnt	Pcnt	
Female	79	3.227	3.243	4	5.1%	181	3.167	3.192	5	2.8%	260	3.185	3.207	9	3.5%	Female
Male	114	2.944	2.933	3	2.6%	198	3.012	3.046	6	3.0%	312	2.987	3.005	9	2.9%	Male
Total	193	3.060	3.060	7	3.6%	379	3.086	3.116	11	2.9%	572	3.077	3.097	18	3.1%	Total

Undergraduates

	First Year					Not First Year					All Levels Combined					
	Avg GPA			Probation		Avg GPA			Probation		Avg GPA			Probation		
	Cnt	Cum	Spr	Cnt	Pcnt	Cnt	Cum	Spr	Cnt	Pcnt	Cnt	Cum	Spr	Cnt	Pcnt	
Female	2560	3.319	3.254	106	4.1%	10346	3.336	3.239	691	6.7%	12906	3.332	3.242	797	6.2%	Female
Male	2250	3.298	3.225	119	5.3%	9022	3.266	3.146	739	8.2%	11272	3.272	3.162	858	7.6%	Male
Total	4810	3.309	3.240	225	4.7%	19368	3.303	3.196	1430	7.4%	24178	3.304	3.205	1655	6.8%	Total

Notes: **Probation** is the count of students with a cumulative OR term GPA less than 2.0.
 For category "Blue" (formerly "B"), there are 80 allotted admission slots, annually.
 For category "Red" (formerly "C/D"), there are 20 allotted admission slots, annually.

Declared Major, Degrees Awarded

At the University of California, Berkeley, the top fifteen declared majors for student athletes, and the top fifteen declared majors in the College of Letters & Science.

Top 15 Majors, Spring 2013

		S/A	U/G		
Student Athletes		Pcnt%	Pcnt%	L & S Undergraduates	U/G Pcnt%
1.	American Studies	16.7%	2.0%	Economics	9.2%
2.	Political Economy	7.3%	3.2%	Political Science	9.1%
3.	Business Adm	7.3%	0.0%	Integrative Biology	7.2%
4.	Interdisciplinary Studies	7.0%	2.2%	Psychology	7.0%
5.	Media Studies	6.7%	4.3%	Molecular & Cell Biology	6.8%
6.	Sociology	6.1%	4.5%	English	6.1%
7.	Political Science	5.8%	9.1%	Mathematics	4.9%
8.	Social Welfare	5.5%	2.6%	Sociology	4.5%
9.	Legal Studies	3.6%	2.2%	Media Studies	4.3%
10.	Env Econ & Policy	2.4%	0.4%	History	3.4%
11.	English	2.1%	6.1%	Computer Science	3.4%
12.	Psychology	2.1%	7.0%	Political Economy	3.2%
13.	Conserv&Rsrc Studies	1.8%	1.5%	Statistics	3.0%
14.	History	1.8%	3.4%	Public Health	2.9%
15.	Geography	1.8%	1.0%	Social Welfare	2.6%

The **8** undergraduate majors that are **bolded, and green**, are common to both lists.

The second column next to the Student Athlete majors is the percent of undergraduates declared in that major.

Additional numbers for Student Athlete declared majors:

330 Total number of student athletes with a declared major.

50 Number of different declared majors.

NCAA Academic Progress Rate

Sport	2006-07	2007-08	2008-09	2009-10	2010-11	2011-12	Multi-Year Score	
M. Baseball	959	951	950	967	967	1000	970	M. Baseball
M. Basketball	963	945	1000	887	977	961	955	M. Basketball
M. Cross Cntry	864	1000	1000	960	1000	917	974	M. Cross Cntry
M. Football	973	938	959	934	926	923	935	M. Football
M. Golf	1000	1000	983	1000	958	1000	986	M. Golf
M. Gym	1000	1000	1000	941	1000	962	977	M. Gym
M. Soccer	954	968	950	990	975	938	963	M. Soccer
M. Swimming	968	990	939	973	966	945	956	M. Swimming
M. Tennis	969	1000	1000	1000	1000	1000	1000	M. Tennis
M. Track, Indoor	933	958	1000	981	1000	939	987	M. Track, Indoor
M. Track, Outdoor	933	969	1000	981	1000	939	987	M. Track, Outdoor
M. Water Polo	981	965	988	983	967	937	969	M. Water Polo
W. Basketball	1000	1000	950	917	938	960	941	W. Basketball
W. Cross Cntry	1000	1000	981	955	1000	970	976	W. Cross Cntry
W. Crew	1000	1000	1000	1000	1000	992	998	W. Crew
W. Field Hockey	967	1000	972	990	1000	989	987	W. Field Hockey
W. Golf	912	1000	944	1000	967	906	955	W. Golf
W. Gymnastics	1000	952	941	1000	1000	1000	1000	W. Gymnastics
W. Lacrosse	990	1000	1000	966	980	990	983	W. Lacrosse
W. Softball	894	882	943	944	1000	950	965	W. Softball
W. Soccer	992	1000	980	990	981	1000	988	W. Soccer
W. Swimming	979	980	982	1000	977	983	985	W. Swimming
W. Tennis	941	1000	974	1000	1000	1000	1000	W. Tennis
W. Track, Indoor	963	963	953	1000	931	938	953	W. Track, Indoor
W. Track, Outdoor	963	963	955	1000	931	938	954	W. Track, Outdoor
W. Volleyball	1000	976	1000	1000	977	979	995	W. Volleyball
W. Water Polo	1000	988	1000	1000	970	971	986	W. Water Polo
Team Average	967	977	976	976	977	964	975	

Note: Multi-Year Score is a 4-Year Average calculated by the NCAA.
Adjusted upward for graduation bonus, where applicable.

NCAA Graduation Success Rate

Sport	1999-2002		2000-2003		2001-2004		2002-2005		
	GSR	FGR	GSR	FGR	GSR	FGR	GSR	FGR	
M. Baseball	84	65	88	64	86	62	86	55	M. Baseball
M. Basketball	20	15	30	15	33	20	50	36	M. Basketball
M. Cross Cntry	67	60	85	76	88	64	89	69	M. Cross Cntry
M. Football	64	57	65	62	54	52	48	47	M. Football
M. Golf	75	64	70	56	78	63	78	67	M. Golf
M. Gym	88	86	67	75	78	88	88	100	M. Gym
M. Soccer	79	82	79	79	73	70	79	65	M. Soccer
M. Swimming	78	75	79	76	86	85	88	88	M. Swimming
M. Tennis	57	60	75	67	78	67	88	67	M. Tennis
M. Track, Indoor	67	60	85	76	88	64	89	69	M. Track, Indoor
M. Track, Outdoor	67	60	85	76	88	64	89	69	M. Track, Outdoor
M. Water Polo	67	73	67	67	69	67	69	63	M. Water Polo
W. Basketball	92	80	92	82	92	64	83	64	W. Basketball
W. Cross Cntry	85	83	84	85	82	77	87	82	W. Cross Cntry
W. Crew	94	85	93	85	87	83	91	91	W. Crew
W. Field Hockey	87	86	86	89	88	90	87	88	W. Field Hockey
W. Golf	100	100	100	100	100	100	100	100	W. Golf
W. Gymnastics	100	100	90	90	91	83	92	86	W. Gymnastics
W. Lacrosse	91	86	93	83	92	81	93	82	W. Lacrosse
W. Softball	81	75	62	58	67	60	45	31	W. Softball
W. Soccer	88	80	92	81	89	86	93	90	W. Soccer
W. Swimming	96	86	100	89	100	89	95	69	W. Swimming
W. Tennis	80	75	88	71	86	57	88	71	W. Tennis
W. Track, Indoor	86	83	84	85	82	77	87	82	W. Track, Indoor
W. Track, Outdoor	86	83	84	85	82	77	87	82	W. Track, Outdoor
W. Volleyball	92	85	92	92	91	91	100	100	W. Volleyball
W. Water Polo	83	78	88	82	100	82	100	84	W. Water Polo
Four-Year Average for Student Athletes on Aid							80	72	
Four-Year Average for All Undergraduates								90	

Note: GSR is the Graduation Success Rate that is calculated by the NCAA.
 FGR is the Federal Graduation Rate.
 Both GSR and FGR use a four-year average of those graduating within six years.